

Installation Instructions for Velvac "Top Hat" Auxillary Convex Mirror

TOOLS REQUIRED

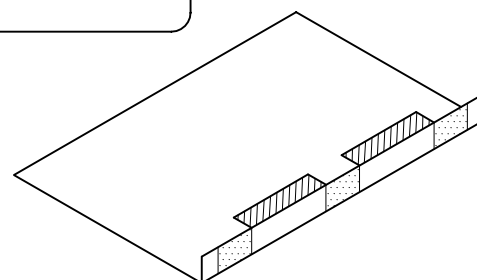
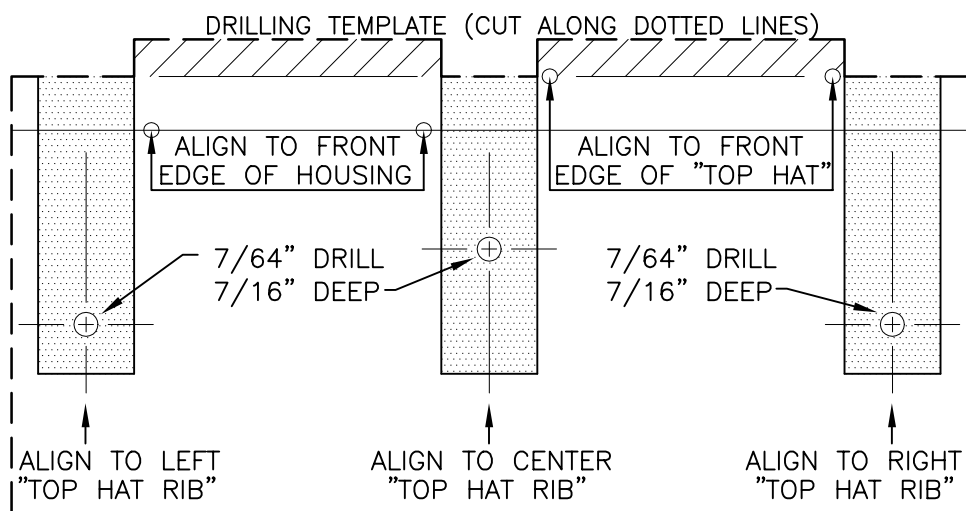
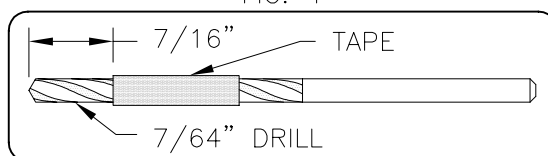
7/64" DRILL- ELECTRIC DRILL- MASKING TAPE- #2 PHILLIPS SCREWDRIVER- SCISSORS- SPRING CLAMPS

1. READ INSTRUCTIONS BEFORE PROCEEDING.
2. WEAR EYE PROTECTION, AND FOLLOW SAFETY INSTRUCTIONS SUPPLIED WITH POWER TOOLS.
3. TAPE PAPER OVER MIRROR GLASS FOR PROTECTION DURING ASSEMBLY.
4. CUT DRILLING TEMPLATE FROM INSTRUCTIONS, AND FOLD AS SHOWN. (PAGE 1 OF 2)
5. TAPE THE 7/64" DRILL BIT (FIG. 1) TO CONTROL DRILLING DEPTH. (PAGE 1 OF 2)
6. TIP THE MIRROR GLASS OF THE "TOP HAT" AND MIRROR IN AS SHOWN IN FIG.-2, (PAGE 2 OF 2) FOR CLEARANCE DURING INSTALLATION.
7. PLACE "TOP HAT" ON MIRROR HOUSING, KEEP FRONT EDGES ALIGNED (FIG. 2). SLIDE "TOP HAT" LEFT TO RIGHT (DETAIL-A) UNTIL "TOP HAT" IS ALIGNED AND FITS TIGHTLY.
8. TAKE THE FOLDED TEMPLATE AND PLACE OVER EDGE OF "TOP HAT" AND MIRROR HOUSINGS, KEEP THE EDGES (NOTED ON THE TEMPLATE) ALIGNED WITH THE EDGES OF THE HOUSINGS, ALIGN THE RIBS OF THE "TOP HAT" HOUSING (DETAIL-A) WITH THE DRILLING TEMPLATE (DETAIL-B).
9. USE SPRING CLAMPS TO HOLD "TOP HAT" TO MIRROR HOUSING.
10. DRILL THE CENTER HOLE FIRST AND START A SCREW BUT DO NOT TIGHTEN. (DETAIL-C)
11. DRILL THE REMAINING TWO HOLES AND START THE SCREWS, THEN TEAR AWAY THE TEMPLATE.
NOW TIGHTEN THE THREE SCREWS TO 25 IN-LBS. (DETAIL-D) NOTE: SPARE SCREW INCLUDED.
12. REMOVE PAPER FROM MIRRORS, CLEAN AND ADJUST MIRRORS.

*

PART NO.	FINISH
715372	FLAT BLACK
715373	BRIGHT WHITE
715374	CHROME
715375	MENDIE WHITE

FIG. 1



FOLDED DRILLING TEMPLATE

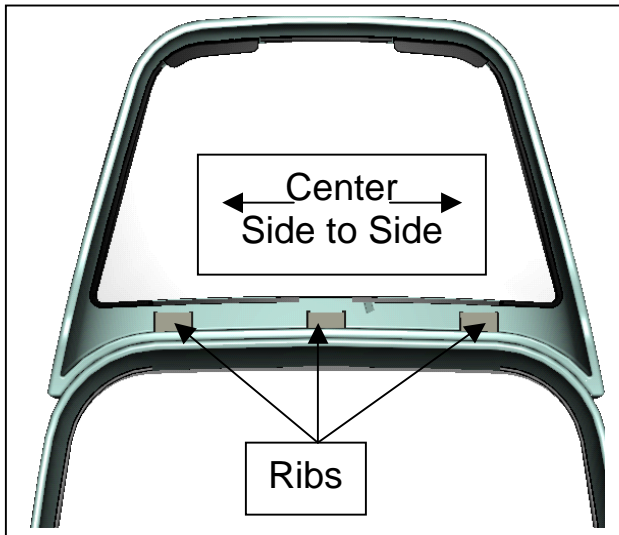
VELVAC	DRAWN BY: MAS
	DATE: 08-12-02
INSTALLATION INSTRUCTIONS FOR "TOP HAT", AUXILLARY CONVEX MIRROR	
PROPRIETARY	SCALE:
THIS CONCEPT & DRAWING IS THE PROPERTY OF VELVAC, INC. AND SHALL NOT BE REPRODUCED, COPIED, DISCLOSED, USED FOR THE MANUFACTURE OR PROCUREMENT FROM SOURCES OTHER THAN VELVAC, INC. WITHOUT WRITTEN PERMISSION FROM VELVAC, INC.	DRAWING NO.
	PAGE 1 OF 2
	*7153722

FUNCTIONAL REVISIONS:
ALL REVISIONS WITH SOLID
TRIANGLE ARE USABLE

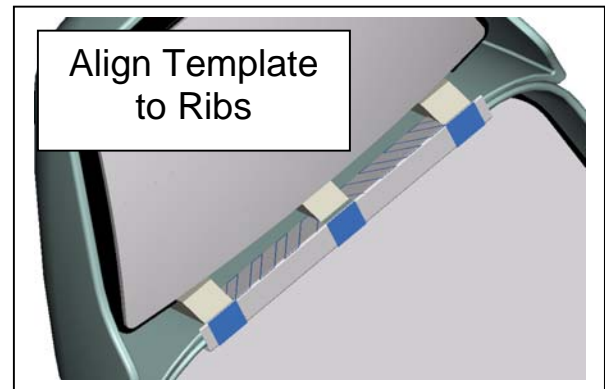
REVISIONS
PROJECT #1753
▲01 08-12-02 MAS

Installation Instructions for Velvac “Top Hat” Auxiliary Convex Mirror

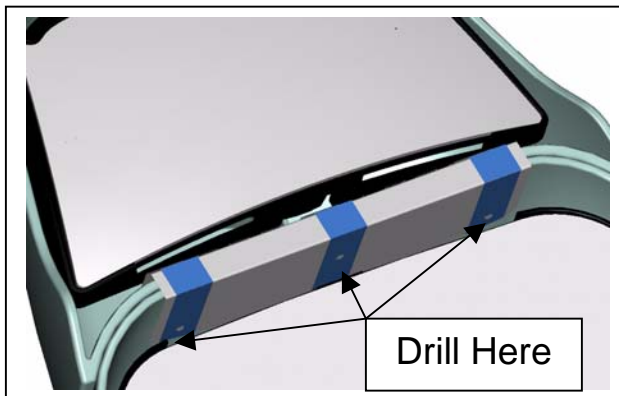
Detail-A Front View



Detail-B



Detail-C



Detail-D

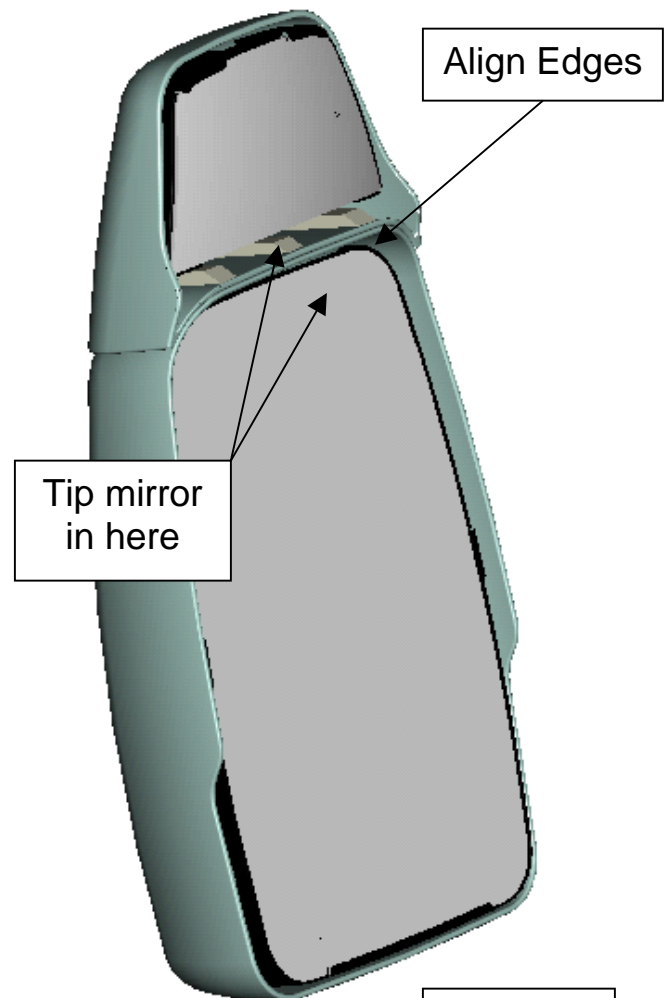
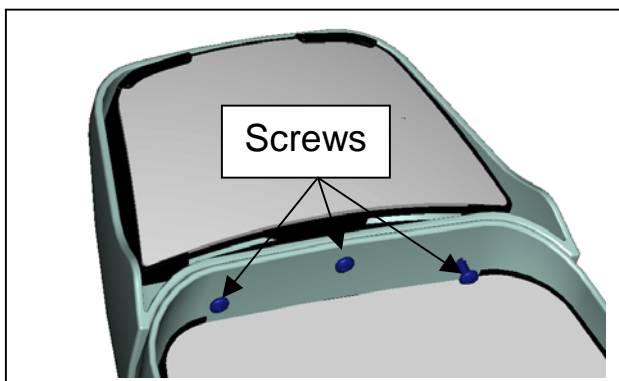


Figure-2