

800-888-5072

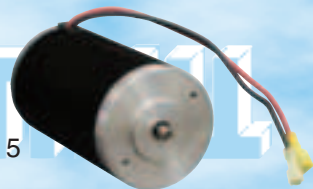
**MILL SUPPLY
SNOW PLOW REPLACEMENT PARTS**

Application for:

SNOW-EX® Type Spreaders

Spinner Motor

NEW



5

LOC	PART NO.	DESCRIPTION	REPLACES OEM #	PRICE
5	933-0855	12 VDC Spinner Motor	D68	198.50

NEW

That fits sp7500, 7550, 8500

Spinner Gear Box

NEW



7

LOC	PART NO.	DESCRIPTION	REPLACES OEM #	PRICE
7	933-0190	Spinner Gear Box	D6107	267.30

NEW

That fits Snow-Ex SP300, SP575, SP1075, SP6000
SP7500, 7550, 8500

Controllers

NEW



20



21

LOC	PART NO.	DESCRIPTION	REPLACES OEM #	PRICE
20	933-0623	Controller that fits Snow-Ex SP325, SP575, SP1075	D62	314.00

NEW

NEW

- Provides more efficient salt distribution
- Speeds the melting process
- Works at lower temperatures than salt
- Residual material on the pavement last longer
- Reduces the number of applications required
- Helps granular material adhere to pavement better
- 12-volt, 3 GPM/45 PSI electric diaphragm pump
- 55-gallon polymer reservoir (34"L x 23"W x 26"H)
- 105-gallon polymer reservoir (69"L x 20"W x 25"H)
- Low pressure-empty tank light/buzzer indicator
- In-cab variable speed pump control (electric version)
- Includes complete system tank, pump, cab controller, hoses, fittings, ball valve, filter, wiring, connectors, brackets and tie downs
- Universal design for any spreader (check tank dimensions and side gussets for clearance)
- Enclosed system for corrosion resistance
- Easy to use and maintain

Liquid Spray System

Liquid Spray System applies chemical agents (salt brine, calcium or magnesium chloride, glycol etc.) to salt, sand or other material as it is being dispersed onto a road surface.



LS1



LS6



**Cab Controller
Included**

**SALE
THRU
12/15/11**



LS4T

Part No.	Description (All systems operate on 12 Volts)	Reg. Price	SALE PRICE
LS1	12-Volt Liquid Spray System, Cab Control, One 55 gallon Poly Reservoir, 148 lbs.	1422.00	1182.00
LS2	12-Volt Liquid Spray System, Cab Control, Reservoir Excluded, 48 lbs.	1217.00	1011.00
LS3	12-Volt Liquid Spray System, Cab Control, Two 55 gallon Poly Reservoirs, 248 lbs.	2184.00	1815.00
LS4	12-Volt Liquid Spray System, Cab Control, One 105 gallon Poly Reservoir, 184 lbs.	2092.00	1924.00
LS4T	12-Volt Liquid Spray System, Tailgate Mount, Cab Control, 105 gal. Poly res., 325 lbs.	2092.00	1924.00
LS4TH	Hydraulic Liquid Spray System, Tailgate Mount, Cab Control, 105 gal. Poly. Res., 357 lbs.	4134.00	3617.00
LS5	Liquid Spray System, Cab Control, Two 105 gallon Poly Reservoirs, 309 lbs.	3150.00	2920.00
LS6	Liquid Spray System, Cab Control, 30 gallon, Poly Reservoir, fits 140 models, 116 lbs.	1244.00	1123.00
LS7	Liquid Spray System, Cab Control, 30 gallon, Poly Reservoir, fits 354 models, 85 lbs.	1195.00	1178.00

Manufacturers names, Meyer®, Western®, Fisher®, Diamond®, Boss®, Blizzard®, Curtis®, Snow-Ex®, Sno-Way®, Chevrolet®, Ford®, and Dodge®, numbers, and descriptions are used for reference purposes only. It is not implied that any part listed is the product of the original manufacturers or approved by any of these manufacturers. Prices subject to change without notice.

www.discountsnowplowparts.com

65



4 AND 4.5 YARD STAINLESS STEEL SALT & SAND SPREADERS

Designed for dump bodies & flat bodies with a GVW chassis of 15,000 to 20,000 lbs. and is available with either hydraulic motor drive or 10-1/2 H.P. gas engine.

7 thru 16 Cubic Yard Municipal Hopper Spreaders Available, Call us.

GENERAL:

- Self-contained hopper.
- Spreads free flowing materials sand and/or salt.
- Spread width of 4' to 30'.

MATERIAL HOPPER:

- 12 gauge 304 stainless steel with continuously welded seams.
- All hopper sides are formed with a continuous "J" channel profile for added rigidity and strength.
- Optimum material feed is maintained by hopper side walls sloped at 45°.
- Heavy-duty 4-section hinged top grate is standard. Bars are 1/4" diameter located on 3" center grid.
- Built-in four corner lift points.

CONVEYOR:

- 12-1/2" wide, all steel pintle chain conveyor with 1/4" x 1" crossbars on 4-5/8" centers.
- Replaceable 10 gauge stainless steel chain shields.
- Replaceable 10 gauge stainless steel conveyor floor.
- 10 gauge stainless steel inverted "Vee".
- Conveyor driven by 20:1 ratio worm gearbox utilizing tapered bearings.
- Conveyor chain is adjustable for chain take up, providing optimum performance and drive life.
- Chain drive and idler sprockets are 6-tooth cast sprockets keyed to 1-1/4" shafts.
- Conveyor chain wiper minimizes waste.

SPINNER ASSEMBLY:

- Spinner chute has two adjustable internal baffles.
- Four (4) external baffles (3 adjustable, 1 fixed).
- 18" x 3/4" thick polyurethane spinner disc.
- Hydraulic model's chute utilizes four S.S. spring loaded quick detach pins for ease of: material unloading, tow hitch access and storage.
- Bolt-on spinner housing minimizes replacement cost.



***Pictured with optional equipment, not included**

POWER SOURCE:

- Hydraulic Drive: Two independent hydraulic motors (15 GPM @ 1,500 PSI).
- Gas Engine: 10.5 horsepower Briggs & Stratton.

OPTIONAL EQUIPMENT:

- Nylon strap mounting kit.
- Tailgate latch kit.
- Liquid spray system, electric.
- Stainless steel D.O.T. spreader lightbar.

DIMENSIONS:

- 4 cu. yd. — Overall length, 108"; Width, 70"; Height, 45"; Recommended use, dump bodies and flat beds with a GVW chassis of 15,000 to 26,000 lbs.
- 4-1/2 cu. yd. — Overall length, 120"; Width, 70"; Height, 45"; Recommended use, dump bodies and flat beds with a GVW chassis of 15,000 to 26,000 lbs.

SPREADERS

Sale price good thru 12/31/11

Part No.	Description	Reg. Price	SALE
1400500SS	4 cu. yd. 108" Stainless Steel Hopper Spreader Kit, Gas Engine, 1,500 lbs.	\$7424.00	\$6859.00
1400500SSH	4 cu. yd. 108" Stainless Steel Hopper Spreader Kit, Hydraulic Drive, 1,435 lbs.	\$7076.00	\$6702.00
1400550SS	4.5 cu. yd. 120" Stainless Steel Hopper Spreader Kit, Gas Engine, 1,560 lbs.	\$7627.00	\$7205.00
1400550SSH	4.5cu. yd. 120" Stainless Steel Hopper Spreader Kit, Hydraulic Drive, 1,500 lbs.	\$7354.00	\$7048.00

ACCESSORIES



LB8663SST



3008560

- LB8663SST - Stainless Steel D.O.T. Spreader Lightbar, 9-Hole Round (8"x3"x66"), lights and wiring not included; 28 lbs. **\$294.36**
- 3008560 - Hopper Spreader Tailgate Lock Kit, 40 lbs. **\$134.72**
- 1496505 - Nylon Ratchet Strap Mounting Kit **\$53.20**

LED AUXILIARY LIGHTING

View your salt spread with an auxiliary Lamp mounted behind your vehicle. New LED styles to choose from. See page 4.





800-888-5072

MILL SUPPLY

SNOW PLOW REPLACEMENT PARTS

1.8 & 2.3 Cu.Yd. Gas Poly/Steel/Stainless Steel Hopper Salt & Sand Spreaders

1.8 Cubic Yd Capacity, 96" models
2.3 Cubic Yd Capacity, 120" models



Stainless steel models feature high-quality grade 304 stainless steel components, including: Hopper, Hopper Supports, Hopper Floor, Gussets, Spinner Chute Assy, Deflectors, Engine Hood, and Inverted V.

1.8 Cubic Yard Capacity



Rotationally molded double-wall polymer unibody spreader with smooth angled walls to maximize material flow. Features high-quality grade 304 stainless steel Spinner Chute Assembly, Deflector and Engine Hood.

Part No.	Description	96" Models are 1.8 Cubic Yard Capacity — 120" Models are 2.3 Cubic Yard Capacity	Shipping Wt.	Price	SALE
1400050	* 96" Carbon Steel Hopper Spreader w/standard length spinner & chute assy, w/inverted 'V' & top screen		945 lbs.	\$3343.00	\$3311.00
1400050SS	* 96" Stainless Steel Hopper Spreader w/standard length spinner & chute assy, w/inverted 'V' & top screen		750 lbs.	\$4226.00	\$3966.00
1400100	* 96" Carbon Steel Hopper Spreader w/extended length spinner & chute assy, w/inverted 'V' & top screen		955 lbs.	\$3614.00	\$3363.00
1400100SS	* 96" Stainless Steel Hopper Spreader w/extended length spinner & chute assy, w/inverted 'V' & top screen		760 lbs.	\$4373.00	\$4104.00
1400400	* 96" Polymer Hopper Spreader w/standard length spinner & chute assy, w/inverted 'V' & top screen		837 lbs.	\$3960.00	\$3801.00
1400450	* 96" Polymer Hopper Spreader w/extended length spinner & chute assy, w/inverted 'V' & top screen		853 lbs.	\$4121.00	\$3956.00
* Overall Length 113", Capacity Struck 1.8 cu.yd., Capacity Rounded 2.1 cu.yd., Width 47", Height 32-1/2"					
1400300SS	** 120" Stainless Steel Hopper Spreader w/standard length spinner & chute assy, w/inverted 'V' & top screen		910lbs.	\$4607.00	\$4509.00
1400350SS	** 120" Stainless Steel Hopper Spreader w/extended length spinner & chute assy, w/inverted 'V' & top screen		922 lbs.	\$4755.00	\$4656.00
** Overall Length 137"Capacity Struck 2.3 cu.yd., Capacity Rounded 2.7 cu.yd. Width 47", Height 32-1/2"					

Sale Good Thru 12-31-11

All hopper spreaders are completely self-contained, ultra-durable spreader units designed for ice and snow control. The rugged design allows for use with salt, sand and other materials. The complete assembly mounts easily on pickup, dump and platform trucks making it ideal for multiple users.

STEEL/STAINLESS STEEL MATERIAL HOPPER – Electrically welded 12-gauge ends and steel sides sloped at 45° are constructed with channel formed top edges. 12-gauge vertical supports add extra strength. Uses a single lift point on the cross support beam for easy loading and unloading. The floor is 10-gauge steel. **POLY-MER MATERIAL HOPPER** – Molded double-wall polymer unibody spreader with smooth angled walls. Features integrated positive position mount systems plus 4 piece tie down kit. **CONVEYOR** – The conveyor is made of 12" wide all-steel pintle chain with 3/16"x 3/4" cross bars. Chain strength is 11,000 lbs. per strand; 22,000 lbs. total weight. The drive sprockets are 6 tooth cast iron on a 1-1/8" diameter shaft. Conveyor chain adjusts 3-1/2". The drive shaft has sealed, self-aligning ball bearings with grease fittings. The idler drum has 1" dia. ball bearings. **CONVEYOR GEAR CASE** – Constructed of aluminum bronze, worm gear is hardened steel and ground. Housing is made of durable cast iron. Gear ratio is 20:1 with 1" input shaft and 1-1/8" output shaft on tapered roller bearings. **FEEDGATE** – Lever operated with a friction lock for accurate adjustment. **SPINNER CHUTE ASSEMBLY** – A polymer disc with four fins is connected to a 3/4" diameter shaft secured on two pillow block bearings. The spreading material is guided from the conveyor to the spinner plate through an enclosed 12-gauge chute with internal and external deflectors. Adjustable deflectors allow for complete directional spread control and full or compact spread. Total spread radius ranges from 2' to 25'. The extra wide rear deflector protects the rear and under carriage of the vehicle. **ENGINE** – Heavy-duty 10.5 horsepower Briggs & Stratton gas engine. Engine comes equipped with alternator and 12 volt electric starter with in-cab start/stop and electric throttle control (standard). **ELECTRIC THROTTLE CONTROL** – Allows for full-range of throttle settings, including idle and full choke, via the in-cab hopper control box. Use of electric throttle control eliminates cable freezing, binding and breaking. **CLUTCH** – 12 volt DC electric clutch has a three-position in-cab switch for greater control. Also allows for low speed operation and spot spreading.

OPTIONS AND ACCESSORIES

142005A	Spinner/Chute Assy., Standard Length, Carbon Steel	\$443.00
142000ASS	Spinner/Chute Assy., Standard Length, Stainless Steel	\$593.00
1497500	Spinner/Chute Assy., Extended Length, Carbon Steel	\$536.27
1497500SS	Spinner/Chute Assy., Extended Length, Stainless Steel	\$855.90
1430034	Spreader Battery, 12-Volt, 20AH, 275 CCA SLA	\$95.80
1493500	Hopper Side Extension Kit, 12", Pair (for 96"x50-3/4" Steel Spreader) (also avail. in S.S.)	\$403.50/pr
1499500	Inverted 'V' over Conveyer for 96" Spreader, Carbon Steel, Black Powder Coat Finish	\$119.00
1499500SS	Inverted 'V' over Conveyer, for 96" Spreader, 304 Stainless Steel	\$164.00
1499300SS	Inverted 'V' over Conveyer, for 120" Spreader, 304 Stainless Steel	\$207.95
1498550	Top Screen for 96" x 50.5" Steel/Stainless Steel Spreader, Black Powder Coat Finish	\$466.60
1498551	Top Screen for 96" x 47" Steel/Stainless Steel Spreader, Black Powder Coat Finish	\$331.00
1498571	Top Screen for 120" x 47" Steel/Stainless Steel Spreader, Black Powder Coat Finish	\$474.10
1496500	Hopper Hold Down Kit, Includes: (set of 4) 1-1/2" x 6" Heavy Duty Forged Turnbuckles	\$68.40/set
1496505	Spreader Hold-Down Kit, Includes: (set of 4) 2" x 5" Ratchet Straps	\$68.40/set
1491301	Tarp Kit for 120" x 47"W Spreaders	\$125.55
1491500	Tarp Kit for 96"L x 50.5"W Spreaders (Late 2005 models will be 47" width)	\$106.00
1491501	Tarp Kit for 96"L x 47"W Spreaders	\$106.00
1401150	Clutch Assy, Electric 12VDC	\$202.00
1401100P	Chain, Pintle Weldment (Drag Chain)	\$338.00

Manufacturers names, Meyer®, Western®, Fisher®, Diamond®, Boss®, Blizzard®, Curtis®, Snow-Ex®, Sno-Way®, Chevrolet®, Ford®, and Dodge®, numbers, and descriptions are used for reference purposes only. It is not implied that any part listed is the product of the original manufacturers or approved by any of these manufacturers. Prices subject to change without notice.

www.discountsnowplowparts.com



SHPE3000 – 3 Cubic Yard Electric Poly Hopper Spreader

**Sale thru
 12/31/11
 \$5774.00**

SHPE-3000

Reg. Price \$6528.00
SALE PRICE \$5774.00

Overall Size less chute:
114"L x 53"H x 50"W

Chute adjusts from
18" to 33"
 in length



SHPE-3000 — 3 Cubic Yard Capacity

This new Poly Hopper Spreader is completely self contained and has an ultra durable design for ice and snow control. The rugged unit allows for use with salt or salt/sand mix. The complete assembly mounts easily on pickups, dump, platform and utility trucks, making it ideal for municipalities, shopping malls, industries, hospitals and private contractors.

- 100% rotationally molded, double wall, polymer hoppers.
- Two ultra-quiet, 12 VDC, direct-drive gear motors independently power the spinner and auger
- Independently powered vibrator
- Black powder coated steel top screen
- Spreader tie-down kit
- Hinged poly deflector lids
- Suggested trucks with minimum 13,000 lbs. GVW and above



View your salt spread with an auxiliary lamp mounted behind your vehicle. See page 4.

Eliminate Wet, Sticky or Frozen Material Clinging to your Salt Spreader Use our Tailgate Hopper Vibrator Kit

The 12 Volt Vibrator is designed to maximize steady flow of dry salt in plastic or steel tailgate style spreaders. Everything needed for installation and operation is included in an affordable kit.

These Vibrator are continuous run and must be turned off when material is not being spread. On-off switch is included.

Totally sealed - will withstand the abuse of winter elements.

One Hour Installation



93-500



93-350



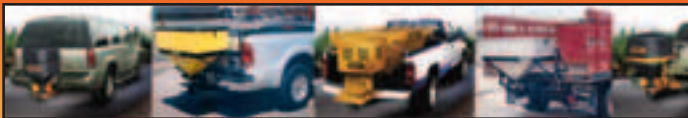
93-400

93-350 - Tailgate Hopper Vibrator. Use on small tailgate spreaders **\$285.00**

93-400 - Tailgate Hopper Vibrator w/80 force pounds. Use on medium size spreaders **\$276.00**

93-500 - V-Hopper Vibrator w/200 force pounds. Use on V-hopper Spreaders **\$311.52**

Manufacturers names, Meyer®, Western®, Fisher®, Diamond®, Boss®, Blizzard®, Curtis®, Snow-Ex®, Sno-Way®, Chevrolet®, Ford®, and Dodge®, numbers, and descriptions are used for reference purposes only. It is not implied that any part listed is the product of the original manufacturers or approved by any of these manufacturers. Prices subject to change without notice.



800-888-5072

MILL SUPPLY

SNOW PLOW REPLACEMENT PARTS

Tailgate Spreaders

HEAVY DUTY SUV TAILGATE SPREADER

**2" RECEIVER MOUNT
30 FEET MATERIAL SPREAD**



**354-0350
Sale Price
\$645.00
Good Thru 12-31-11**

- Mount on 2" receiver
- 330 lb. capacity
- Variable Speed - Hard wired
- Spreads material 30 feet
- Fold-away feature
- Ideal for driveways & lots
- UPSable



SUV PRO MODEL

- Rugged black thermoplastic hopper w/orange powder coated steel frame.
- Designed to hold 330 lbs. of #1 rock salt, or similar same size material.
- Spreads up to 30 feet wide — ideal for driveways and small parking lots.
- Heavy-duty sealed ball bearing motor with in-cab variable speed control.
- Fold-away feature. Release hitch pin to drop spreader out of way.
- Comes complete with all mounting hardware for 2" receiver hitches.
- Dimensions: 40.5"H x 22.5"W x 20.5"D

Part No.	Description	Price
354-0350	SUV Pro Spreader Complete SALE \$645.00 Reg. Price	\$782.00
332-0010	12V Motor, old style, wires attach to motor	\$156.50
0202000	12V Motor, new style, w/46" wire lead & packard connectors	\$257.54
332-0039	Motor Wire Harness with plug (attaches to motor)	\$20.65
332-0033	Harness Kit (includes motor pigtail)	\$58.50
331-0007	Lid Cover	\$34.88
M1215-101	4-1/2" Rubber Hold-Down w/Catch	5.30
332-0023	Speed Control Assembly	\$258.32
332-0028	Auger Spinner Assembly (New Poly Style)	\$78.62
332-0025	Spinner Hub Weldment for steel spinner plate	\$19.98
99420	Storage Rack; Neatly store spreader during off season	\$84.16
300-7811	Auger for poly spinner plate (New Style)	\$43.65
300-5706	Poly spinner plate (New Style) No hub required	\$27.80

The SUV Tailgate Spreaders on this page includes a foldaway feature. Simply release a hitch pin, and the spreader rotates down away from the rear door or tailgate for easy cargo access, without removing the spreader.



**2" & 1-1/4" RECEIVER MOUNT
12 FEET MATERIAL SPREAD**



**354-0300
Sale Price
\$520.00
Good Thru 12-31-11**

- Mounts on 2" or 1-1/4" receiver
- 330 lb. capacity
- Plugs into cigarette plug
- 12 feet Material Spread
- Foldaway feature
- Ideal for driveways
- UPSable

SUV STANDARD MODEL

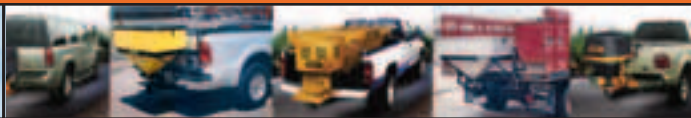
Ideal for the home owner / residential user. The 12' spread path is designed for one pass coverage of driveways and access roads.

- Dimensions: 40.5" H x 22.5" W x 20.5" D Weight: 68 pounds
- Features an attractive and rugged thermoplastic black hopper and orange powder coated mounting frame.
 - Heavy-duty 12-volt spreader motor is housed in a sealed motor chamber.
 - 12 feet material spread controlled from a manual, stainless steel open/close gate and an in-cab on-off control.
 - Ultra-smooth hopper interior provides material transfer by channeling it to the stainless steel-lined hopper throat and stainless steel spinner, providing an even flow of material without the need of expensive auger add-ons.
 - Capacity: 330 pounds #1 rock salt or similar material.
 - Mounting: comes complete with all mounting hardware for 2" and 1-1/4" receiver hitch and cigarette plug adapter.

Part No.	Description	Price
354-0300	SUV Standard Spreader Complete SALE \$520.00 Reg. Price	\$597.00
354-0325	12V Spreader Motor	\$128.00
331-0036	Wire Harness Kit, complete	\$19.40
331-0007	Lid Cover	\$34.88
M1215-101	4-1/2" Rubber Hold-Down w/Catch	5.30
332-0028	Auger Spinner Assembly (used on spreader w/o gate)	\$78.62
331-0033	Hub for poly spinner plate	\$5.10
331-0035	Clevis pin for spinner hub	\$.80
AV-8482P	Cotter pin	\$.03
300-5705	Poly spinner plate (Used on spreader with gate)	\$27.80

99420 - Storage Rack; Neatly store spreader during off season **\$84.16**

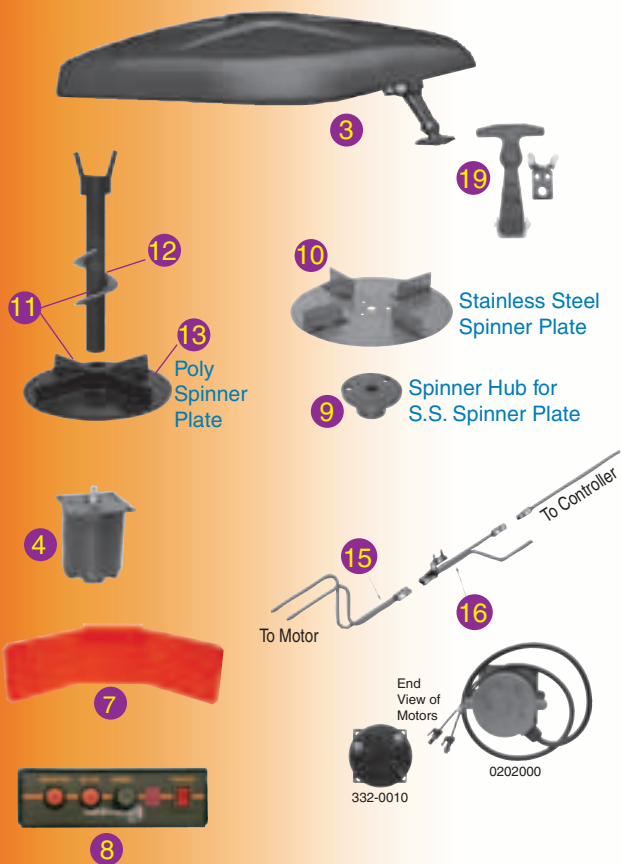
Manufacturers names, Meyer®, Western®, Fisher®, Diamond®, Boss®, Blizzard®, Curtis®, Snow-Ex®, Sno-Way®, Chevrolet®, Ford®, and Dodge®, numbers, and descriptions are used for reference purposes only. It is not implied that any part listed is the product of the original manufacturers or approved by any of these manufacturers. Prices subject to change without notice.



Tailgate Spreaders



Parts Guaranteed for One Year



View your salt spread with an auxiliary lamp mounted behind your vehicle. See page 4.



Rugged thermoplastic hopper with orange steel framing. Designed to hold 600 lbs. of #1 rock salt, calcium chloride or similar pelletized material of the same size. Spreads from 3 to 30 feet, ideal for parking lots, driveways, shopping centers and roadways. Heavy duty sealed ball bearing motor is controlled by an in-cab electronic speed control. Stainless steel spinner and auger assures an even flow of spreading material. Complete with all mounting hardware and quick detach power cables.

Part No. 332-0050 Reg.Price \$1102.70 SALE \$919.00
Sale thru 12/31/11

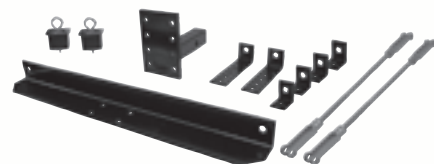
Replacement Parts for Buyers Tailgate Spreaders

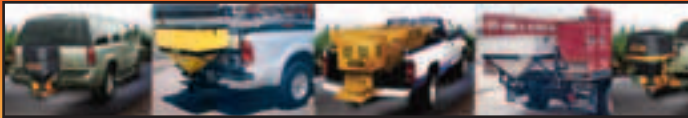
LOC	PART NO.	DESCRIPTION	PRICE
1	332-0050	Tailgate Spreader Complete	1102.70
N.I.	332-0003	Hopper only, Black	240.55
3	332-0006	Cover w/latches, Black	58.50
4	332-0010	Motor, 12V, old style, wire directly to motor	156.50
N.I.	0202000	Motor, 12V, new style, has 46" wire lead and packard connectors	257.54
7	332-0021	Spinner shield	18.54
8	332-0023	Speed control assembly	258.32
9	332-0025	Spinner hub for stainless steel spinner plate	19.98
10	332-0015	Spinner Plate, Stainless Steel	36.72
11	332-0028	Spinner auger assy, assembled (New Poly Style)	78.62
12	300-7811	Auger, (inside bottom has keyway) (New Style)	43.65
13	300-5706	Poly spinner plate (New Style)	27.80
N.I.	332-0033	Harness kit, complete	58.50
15	332-0039	Motor wire with plug	20.65
16	332-0036	Spreader Socket assy, (between motor wire and wire to controller)	28.22
N.I.	331-0035	Clevis Pin for Spinner Hub	\$.80
N.I.	AV-8482P	Cotter Pin for 331-0035	\$.03
19	M1215-101	4-1/2" Rubber Hold-Down w/Catch	5.30

Tailgate Spreader Mount to go into 2" Receiver

332-0061 Spreader Mount \$227.26

This mount will allow you to mount and dismount the 332-0050 and 332-0060 spreader quickly and easily. Designed to fit 2" receivers. Will work on most pick-up trucks regardless of tailgate widths.





800-888-5072

MILL SUPPLY

SNOW PLOW REPLACEMENT PARTS

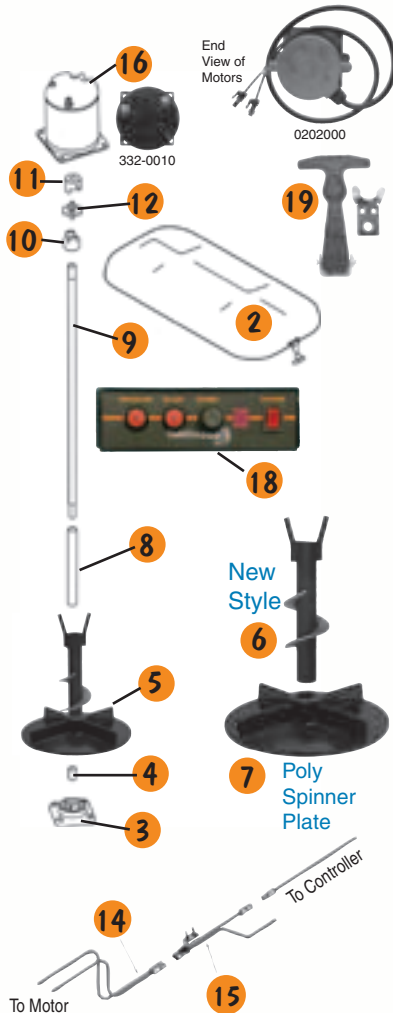
LOW PROFILE TAILGATE SPREADER

**332-0060 - Low Profile
Tailgate Spreader Reg. \$1214.30
SALE thru 12/31/11 \$965.00**

This low profile tailgate spreader allows for full rear view from the vehicle. Holds 800 lbs. of #1 rock salt or similar material. The 12 volt motor is housed in a sealed motor chamber inside the hopper maximizing its protection from salt and other elements. Powder coated frame and rugged thermoplastic hopper provide exceptional corrosion resistance. Material flow and spread width, from 3' to 30', are controlled from an in-cab electronic spreader control panel. Comes complete with all mounting hardware.



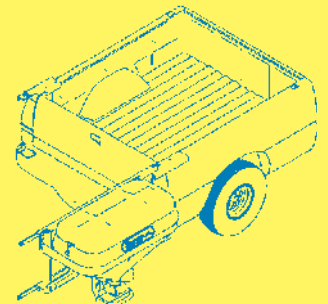
Low profile design allows for greater rear visibility



Replacement Parts for Low Profile Tailgate Spreaders

LOC	PART NO.	DESCRIPTION	PRICE
1	332-0060	Low Profile Spreader Complete	1214.30
2	332-0007	Lid Assembly	94.80
3	332-0062	Bearing, 5/8" Bore, 4 Hole 2-1/2" C-C	16.92
3	332-0074	Bearing, 5/8" Bore, 4 Hole 2-1/8" C-C	40.28
4	332-0024	Bushing, Bronze, Oilite, 1/2"IDx5/8"ODx1"	2.80
5	332-0063	Spinner Auger Assy (New poly style)	62.80
6	332-0065	Auger for poly spinner plate (New Style)	36.72
7	300-5706	Poly spinner plate (New Style)	27.80
8	332-0075	Auger Bushing	7.92
9	332-0076	Shaft, Spinner	37.80
10	332-0077	Coupling, 1/2" shaft	10.65
11	332-0078	Coupling, 5/8" shaft	10.65
12	332-0079	Spider, solid center	6.10
N.I.	332-0034	Spreader Harness Kit, complete	60.48
14	332-0041	Motor Wire Harness with plug	15.03
15	332-0036	Spreader Socket Assy, (between motor harness plug & wire to controller	28.22
16	332-0010	Motor, 12V, old style, wire directly to motor	156.50
N.I.	0202000	Motor, 12V, new style, has 46" wire lead with packard connectors	257.54
18	332-0023	Speed control assembly	258.32
19	M1215101	4-1/2" Rubber Hold-Down w/Catch	5.30
N.I.	331-0035	Clevis Pin for Spinner Hub	\$.80
N.I.	AV-8482P	Cotter Pin for 331-0035	\$.03

Wintergate Spreader Mount



354-0020 - Add the optional **Wintergate Spreader Mount** to the 332-0050 or 332-0060, and enjoy the benefits of easy access to the pickup truck bed. Designed with adjustable telescoping rails that accommodates any pick-up truck width. Now you have access to the bed of your pick-up without removing the spreader. With the removal of two quick pins you can rotate the entire spreader out of the way for full bed access. **\$315.00**

Tailgate Spreader Mount to go into 2" Receiver



332-0061 Spreader Mount \$227.26

This mount will allow you to mount and dismount the 332-0050 and 332-0060 spreader quickly and easily. Designed to fit 2" receivers. Will work on most pick up trucks regardless of tailgate widths.



View your salt spread with an auxiliary lamp mounted behind your vehicle. See page 4.

Manufacturers names, Meyer®, Western®, Fisher®, Diamond®, Boss®, Blizzard®, Curtis®, Snow-Ex®, Sno-Way®, Chevrolet®, Ford®, and Dodge®, numbers, and descriptions are used for reference purposes only. It is not implied that any part listed is the product of the original manufacturers or approved by any of these manufacturers. Prices subject to change without notice.

www.discountsnowplowparts.com

71



Electric Drive Polymer Hopper Salt & Sand Spreaders

**Sale Prices
 good thru
 12/31/11**

The Electric Polymer Salt Dogg Spreaders are completely self-contained, ultra-durable spreader units designed for ice and snow control. The rugged design allows for use with salt or salt/sand mix. The complete assembly mounts easily on pickup, dump and platform trucks, making it ideal for municipalities, shopping malls, industries, hospitals and private contractors.



**1-1/2
 Cubic
 Yard**

354-0400/354-0425: 1.5 Cubic Yard Capacity. 92" in length and requires 77" minimum bed length. Fits all 8' beds and most standard 6' beds; Capacity Struck, 1.45 cu. yd.; Recommend 3/4 or 1-Ton trucks.



View your salt spread with an auxiliary lamp mounted behind your vehicle. See page 4.



**2 Cubic
 Yard**

354-0430/354-0435: 2.0 Cubic Yard Capacity, 96" in length and requires 77" minimum bed length. Fits all 8' beds and most standard 6' beds; Capacity Struck, 2.0 cu. yd.; Recommend 3/4 or 1-Ton trucks above 10,000 lbs. GVWR.



**3/4
 Cubic
 Yard**

SHPE0750 & SHPE0750X - .75 Cubic Yard Capacity. 53" in Length and can be used with utility vehicles or 1/4 & 1/2-ton Pickups. Ideal for residential and light commercial applications. Can be ordered with a standard or extended chute. Uses a Variable Speed Controller

MATERIAL HOPPER – Rotationally molded double-wall polymer unibody spreader with smooth angled walls to maximize material flow. Features integrated positive position mount system plus 4-piece ratchet tie-down kit. No drilling required.

AUGER – Screw-type auger system travels the length of the hopper floor, providing maximum material flow. An independent spinner/auger controller and two 12 VDC motors allows for both independent spinner and auger speed.

MATERIAL FLOW/OUTPUT – Salt, 2.2 cu. ft. / minute; Salt-Sand, 1.3 cu. ft. / minute. Spread width is variable from 5 to 30 feet.

SPINNER CHUTE ASSEMBLY – Material is guided from the stainless steel trough to the polymer spinner plate with an external deflector. A convenient spring-latch locking mechanism allows the spinner assembly to be easily removed for cleaning/storage.

STANDARD EQUIPMENT – 1/4" black powder coated steel top screen. Heavy-duty polyvinyl tarp with reinforced corners and tie-down kit. A 12 VDC vibrator, rated at 210 foot pounds keeps material flowing for maximum performance.



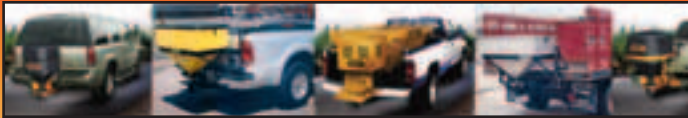
Extended Chute

354-0405 - Replacement Controller	625.60
354-0410 - Replacement Auger Motor	382.00
354-0415 - Replacement Spinner Motor	310.08
354-0420 - Replacement Vibrator, 12VDC	268.80

Electric Drive Polymer Hopper Salt & Sand Spreader

Sale Good Thru 12-31-11

Part No.	Capacity Cubic Yard	Vehicle Application	Chute	Overall Length	Width	Height	Weight	Regular Price	SALE PRICE
SHPE-0750	.75	Utility Vehicle or 1/4 & 1/2-Ton Pickup	Standard	53"	48"	28"	280 lbs.	3025.35	2795.00
SHPE-0750X	.75	Utility Vehicle or 1/4 & 1/2-Ton Pickup	Extended	53"	48"	28"	289 lbs.	3123.90	2895.00
354-0400	1.5	3/4 or 1-Ton Trucks	Standard	92"	50.5"	37.5"	520 lbs.	3623.55	3040.00
354-0425	1.5	3/4 or 1-Ton Trucks	Extended	92"	50.5"	37.5"	529 lbs.	3733.00	3315.60
354-0430	2.0	1-Ton Truck above 10,000 lbs. GVW	Standard	96"	47.5"	40"	560 lbs.	4047.00	3597.60
354-0435	2.0	1-Ton Truck above 10,000 lbs. GVW	Extended	96"	47.5"	40"	564 lbs.	4193.00	3727.20
SHPE-2250X	2.2	1-Ton Truck above 10,000 lbs. GVW	Extended	114.3"	48"	44"	564 lbs.	5061.00	4498.80



800-888-5072

**MILL SUPPLY
SNOW PLOW REPLACEMENT PARTS**

LOW PROFILE TAILGATE SPREADERS



View your salt spread with an auxiliary lamp mounted behind your vehicle. See page 4.



380-0100 - Low Profile Tailgate Spreader combines the robustness of an auger-driven V-Box spreader with the simplicity and easy mounting of a tailgate spreader. The open-auger design gives contractors the option to spread a variety of materials, typically limited to V-Box spreaders using salt/sand mixtures.
Reg. Price \$1994.00

380-0100
Reg. \$1994.00
SALE PRICE
\$1490.00

**11 Cubic ft.
Capacity**

- Class 4 Receiver Hitch Mounting with Horizontal and Vertical Adjustment, no bed rail drilling
- Capacity: 11 cu.ft., 825 lbs.
- 9" Polymer Spinner
- Dual Shaft Gear Motor
- 200 lb., concealed Vibrator
- Horizontal Auger Feed Mechanism
- Variable Speed Controller with Vibrator Switch
- 3ft. – 30ft. Spread Width
- Polyethylene/Stainless Steel/Steel Construction
- Dual action lid provides convenient loading from the ground or pick up bed
- Vehicle application: 3/4 - 1-ton trucks

**ON SALE
THRU
12/31/11**



**10 Cubic ft.
Capacity**

**ON SALE
THRU
12/31/11**



332-0070 Reg. \$1390.00
SALE PRICE \$1190.00

Dimensions: 40" H x 63" W x 27" D

- Rotationally molded double-wall poly construction
- No welded steel framework.
- Heavy-duty 12-volt spreader motor is housed in a sealed motor chamber inside the hopper for extra protection.
- Concealed 80 lb. vibrator.
- Mount directly to 2" hitch receiver or to bumper (includes universal stake pocket attachment).
- Hinged lid with self-latching handle eases loading. Allows for easy filling from bed of truck
- Molded-in hopper handles.
- Easy to assemble.
- Easy to use adjustable flow-gate design.
- Material flow & spread width, from 3' to 30' controlled from an in-cab electronic control panel.
- Easy maintenance (motor replacement).
- Capacity: 10 cu. ft. #1 rock salt or similar material.
- Lighter weight unit for higher load capacity.

- **Low Profile Design for Unobstructed Rear View**
- **Vibrator eliminates need for an auger.**

Manufacturers names, Meyer®, Western®, Fisher®, Diamond®, Boss®, Blizzard®, Curtis®, Snow-Ex®, Sno-Way®, Chevrolet®, Ford®, and Dodge®, numbers, and descriptions are used for reference purposes only. It is not implied that any part listed is the product of the original manufacturers or approved by any of these manufacturers. Prices subject to change without notice.

www.discountsnowplowparts.com

73



Local Calls (216) 518-5072
Toll-Free Fax (888) 781-2700

E-mail: sales@millsupply.com

Prices subject to change without notice

MILL SUPPLY, INC.
 19801 Miles Road
 Cleveland, OH 44128-4117

Most orders ship the
 same day when called
 in before 3p.m. E.S.T.

PRSR STD
 U.S. POSTAGE
 PAID
 MILL SUPPLY INC

Change Service Requested



SALE

**Ultra-Compact
 Magnetic Mount
 Strobe - Page 3**

**As low as
 \$33.20**



SAVE

**Pro-Wings
 Buy 2 Sets & Save
 Page 6**

**As low as
 \$179.95**

NEW LED MINI BAR LIGHTS



SALE

**\$143.98
 Page 2**



SAVE

**\$314.00
 Page 3**

Walk Behind Salt Spreader

Professional grade Steel Construction
 with Large 1.5 cu. ft. polymer hopper
 Capacity: 100 lbs. of bagged salt or
 other free flowing material

**Save Free
 1231/11
 \$106.00**



- One-piece fully-welded steel frame.
- Large 1.5 cu. ft. polymer hopper.
- Cap.: 100 lbs. of salt or other free flowing materials.
- Large 13" pneumatic tires.
- Large flow regulator offers ease of operation.
- Solid control linkage eliminates sticking and stretched cables.
- 3-flap adjustable poly deflector controls spread pattern
- Additional fixed rear deflector protects operator's feet.
- Expanded metal hopper screen helps prevent material jamming.
- Includes a durable plastic rain cover
- Heavy-duty stainless steel gears for added strength.
- Improved restrictor plate design for durability.

363-1100 - Spreader
 with Carbon Steel
 Frame. Reg. \$266.50
SALE \$180.00

SAVE



**Trip Springs
 \$9.98
 Page 15**

SAVE



**Quick Disconnect
 Coupler \$8.49
 Page 17**

Replacement Parts

3014857 - Wheel	\$32.36
3007873 - Apilator Pin	\$1.34
3012880 - Gear Drive	\$37.98



Manufacturers names, Meyer®, Western®, Fisher®, Diamond®, Boss®, Blizzard®, Curtis®, Snow-Ex®, Sno-Way®, Ford®, Chevrolet®, and Dodge®, numbers, and descriptions are used for reference purposes only. It is not implied that any part listed is the product of the original manufacturers or approved by any of these manufacturers.

© Copyright 2011 — Reproduction in whole or in part is strictly prohibited without written permission from MILL SUPPLY, INC.