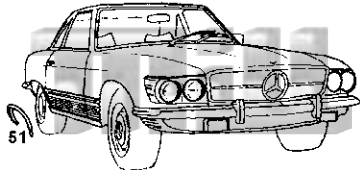




**MERCEDES 350SL/SLC, 380SL/SLC,
450SL/SLC, 560SL
CHASSIS TYPE 107 73-89**



REPLACEMENT SHEETMETAL

Index#	Description	Year	Mill Part#
51	Rear wheel arch, 2DR	73-89	267-71-51

DASH TOPS

DashTop covers fit right over existing dash, makes your dash look new again.



Description	Year	Mill Part #
Dashtop, fits Mercedes, Chassis 107 w/o climate sensor	73-89	DT-705

**MERCEDES 300SD, 380SE/SEL, 500SEL 81-85
300, 350, 420, 560 SEL/SDL 86-91
CHASSIS TYPE 126**

REPLACEMENT SHEETMETAL

Index#	Description	Year	Mill Part#
N.I.	Fender, front	81-91	*264-81-20

**MERCEDES E-CLASS
Coupe/Sedan 86-95
Wagon 87-95
CHASSIS TYPE 124**

REPLACEMENT SHEETMETAL

Index#	Description	Year	Mill Part#
N.I.	Fender, front	86-95	*265-86-20
N.I.	Rocker panel, 4DR	86-95	265-86-42
N.I.	Rear wheel arch	86-95	265-86-54

**MERCEDES C-CLASS 94-00
CHASSIS TYPE 202**

REPLACEMENT SHEETMETAL

Index#	Description	Year	Mill Part#
N.I.	Radiator support upper tie bar	94-00	266-94-01
N.I.	Radiator support assembly (includes upper tie bar)	94-00	*266-94-02
N.I.	Crossmember support assembly	94-00	266-94-03
N.I.	Front fender	94-00	*266-94-20
N.I.	Rear wheel arch	94-00	266-94-51

**MERCEDES E-CLASS
Sedan & Wagon 96-02
CHASSIS TYPE 210**

REPLACEMENT SHEETMETAL

Index#	Description	Year	Mill Part#
N.I.	Rear wheel arch, 4 DR Sedan & Wagon	96-02	267-96-54

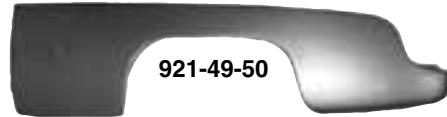
LINCOLN/MERCURY 49-56



921-49-40



921-49-42



921-49-50



92-52-40



92-52-42



92-52-52

REPLACEMENT SHEETMETAL

Index#	Description	Year	Mill Part#
40	Rocker panel, 2DR, fits Lincoln & Mercury	49-51	921-49-40
42	Rocker panel, 4DR, fits Lincoln & Mercury	49-51	921-49-42
N.I.	Rocker panel, 2DR, factory style, fits Lincoln & Mercury	49-51	921-49-43
50	Quarter panel, 2DR, 22"H x 81"L, fits Lincoln & Mercury	49-50	*921-49-50
40	Rocker panel, 2DR, fits Mercury	52-56	92-52-40
42	Rocker panel, 4DR, fits Mercury	52-56	92-52-42
52	Rear wheel arch, 2/4DR, fits Mercury, 9"H x 36"L	52-56	92-52-52

MERCURY 65-66

REPLACEMENT SHEETMETAL

Index#	Description	Year	Mill Part#
N.I.	Rocker panel, 2DR	65-66	96-66-40

MERCURY CAPRI 79-86



40

REPLACEMENT SHEETMETAL

Index#	Description	Year	Mill Part#
N.I.	Doorskin, outer lower 9"	79-86	200-79-31
40	Rocker panel, 2DR	79-86	200-79-40

MERCURY COMET 71-77

FORD MAVERICK 70-77



REPLACEMENT SHEETMETAL

Index#	Description	Year	Mill Part#
50	2DR Rear quarter, 32"Hx63"L (cut down to fit 4DR)	71-77	44-70-50

Specify LH (Drivers Side) or RH (Passenger Side) When Ordering.

All manufacturers' names, numbers, and descriptions are used for reference purposes only. It is not implied that any part listed is the product of the original manufacturers or approved by any of these manufacturers.



Bold Type - New Item • * - Too Large for UPS • N.I. - Not Illustrated
800-888-5072 • Toll Free Fax 888-781-2700
visit our web site: www.rustrepair.com

